

Auckland Oceanic FIR



FIR Point

FIR	ICAO Code	Office	Lat	Long	Lat Input	Long Input	Type	Comment
FIR AUCKLAND OCEANIC EAST	NZZO	APAC	900000S	1630000E	-89.9	163	1	
FIR AUCKLAND OCEANIC EAST	NZZO	APAC	450000S	1630000E	-45	163	1	
FIR AUCKLAND OCEANIC EAST	NZZO	APAC	300000S	1630000E	-30	163	1	
FIR AUCKLAND OCEANIC EAST	NZZO	APAC	280000S	1680000E	-28	168	1	

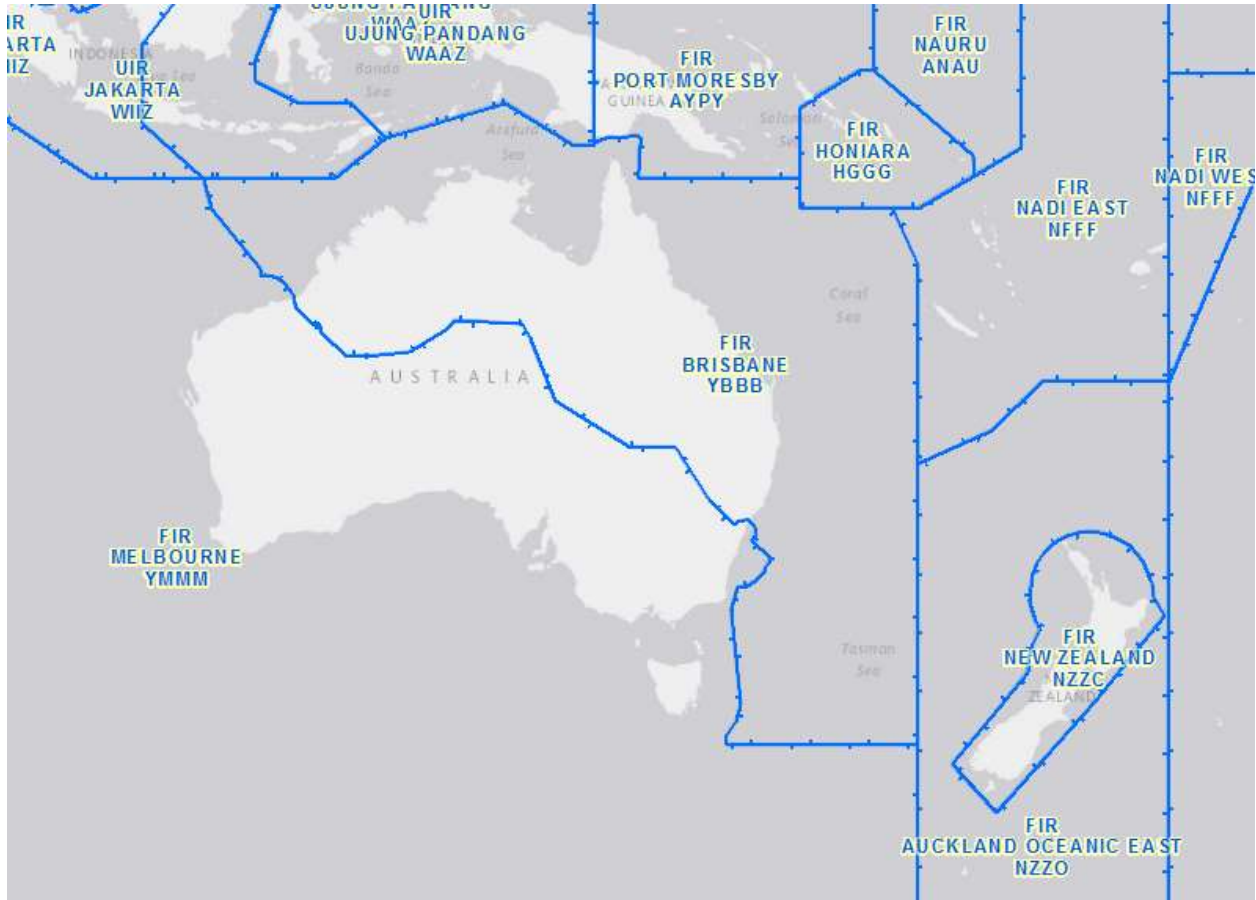
FIR AUCKLAND OCEANIC EAST	NZZO	APAC	250000S	1712500E	-25	171.4167	1	
FIR AUCKLAND OCEANIC EAST	NZZO	APAC	250000S	1800000E	-25	180	1	
FIR AUCKLAND OCEANIC EAST	NZZO	APAC	050000S	1800000E	-89.9	180	1	0500S! 172 W?

FIR	ICAO Code	Office	Lat	Long	Lat Input	Long Input	Type	Comment
FIR AUCKLAND OCEANIC WEST	NZZO	APAC	250000S	1800000W	-25	-180	1	
FIR AUCKLAND OCEANIC WEST	NZZO	APAC	050000S	1600000W	-5	-172	1	0500S! 172 W?
FIR AUCKLAND OCEANIC WEST	NZZO	APAC	050000S	1570000W	-5	-157	1	
FIR AUCKLAND OCEANIC WEST	NZZO	APAC	300000S	1570000W	-30	-157	1	
FIR AUCKLAND OCEANIC WEST	NZZO	APAC	300000S	1310000W	-30	-130.9	1	new; 13054W?? set to 13054W
FIR AUCKLAND OCEANIC WEST	NZZO	APAC	900000S	1310000W	-89.9	-131	1	
FIR AUCKLAND OCEANIC WEST	NZZO	APAC	900000S	1800000W	-89.9	-180	1	

Note

1. APAC 98/8-ATS/COM/MET/SAR/AIS: Re-alignment of the Nadi/Auckland FIR boundary (No information)

Brisbane FIR



FIR	ICAO Code	Office	Lat	Long	Lat Input	Long Input	Type	Comment
FIR BRISBANE	YBBB	APAC	120000S	1143000E	-12	114.5	1	12 00S 110 00E
FIR BRISBANE	YBBB	APAC	120000S	1232000E	-12	123.3333	1	
FIR BRISBANE	YBBB	APAC	092000S	1265000E	-9.33333	126.8333	1	
FIR BRISBANE	YBBB	APAC	070000S	1350000E	-7	135	1	
FIR BRISBANE	YBBB	APAC	095000S	1394000E	-9.83333	139.6667	1	
FIR BRISBANE	YBBB	APAC	095000S	1410000E	-9.83333	141	1	
FIR BRISBANE	YBBB	APAC	093700S	1410000E	-9.61667	141	1	thence along COAST
FIR BRISBANE	YBBB	APAC	091600S	1420300E	-9.26667	142.05	1	
FIR	YBBB	APAC	091900S	1424800E	-9.31667	142.8	1	

BRISBANE								
FIR BRISBANE	YBBB	APAC	090800S	1435200E	-9.13333	143.8667	1	
FIR BRISBANE	YBBB	APAC	092400S	1441400E	-9.4	144.2333	1	
FIR BRISBANE	YBBB	APAC	095700S	1440500E	-9.95	144.0833	1	thence along BARRIER REEF, to
FIR BRISBANE	YBBB	APAC	113000S	1440200E	-11.5	144.0333	1	
FIR BRISBANE	YBBB	APAC	114300S	1440400E	-11.7167	144.0667	1	
FIR BRISBANE	YBBB	APAC	120000S	1440000E	-12	144	1	
FIR BRISBANE	YBBB	APAC	120000S	1550000E	-12	155	1	
FIR BRISBANE	YBBB	APAC	140000S	1550000E	-14	155	1	
FIR BRISBANE	YBBB	APAC	140000S	1611500E	-14	161.25	1	
FIR BRISBANE	YBBB	APAC	175000S	1630000E	-17.8333	163	1	017 40S 163 00E
FIR BRISBANE	YBBB	APAC	300000S	1630000E	-30	163	1	
FIR BRISBANE	YBBB	APAC	450000S	1630000E	-45	163	1	
FIR BRISBANE	YBBB	APAC	443400S	1500000E	-44.5667	150	1	
FIR BRISBANE	YBBB	APAC	435100S	1504000E	-43.85	150.6667	1	
FIR BRISBANE	YBBB	APAC	430000S	1510000E	-43	151	1	
FIR BRISBANE	YBBB	APAC	381100S	1501900E	-38.1833	150.3167	1	
FIR BRISBANE	YBBB	APAC	365700S	1504500E	-36.95	150.75	1	thence along the minor arc of a circle of 120.0NM radius centred on
FIR	YBBB	APAC	351900S	1525600E	-35.3167	152.9333	1	

BRISBANE								
FIR BRISBANE	YBBB	APAC	342100S	1514000E	-34.35	151.6667	1	
FIR BRISBANE	YBBB	APAC	335900S	1520100E	-33.9833	152.0167	1	
FIR BRISBANE	YBBB	APAC	333500S	1515400E	-33.5833	151.9	1	
FIR BRISBANE	YBBB	APAC	332800S	1514800E	-33.4667	151.8	1	
FIR BRISBANE	YBBB	APAC	331500S	1512600E	-33.25	151.4333	1	
FIR BRISBANE	YBBB	APAC	331200S	1511400E	-33.2	151.2333	1	
FIR BRISBANE	YBBB	APAC	332000S	1504200E	-33.3333	150.7	1	
FIR BRISBANE	YBBB	APAC	332700S	1503300E	-33.45	150.55	1	
FIR BRISBANE	YBBB	APAC	320600S	1485000E	-32.1	148.8333	1	
FIR BRISBANE	YBBB	APAC	290000S	1463200E	-29	146.5333	1	
FIR BRISBANE	YBBB	APAC	290000S	1433000E	-29	143.5	1	
FIR BRISBANE	YBBB	APAC	261400S	1382300E	-26.2333	138.3833	1	
FIR BRISBANE	YBBB	APAC	221800S	1363800E	-22.3	136.6333	1	
FIR BRISBANE	YBBB	APAC	212800S	1360900E	-21.4667	136.15	1	
FIR BRISBANE	YBBB	APAC	211100S	1313400E	-21.1833	131.5667	1	
FIR BRISBANE	YBBB	APAC	215100S	1305800E	-21.85	130.9667	1	
FIR BRISBANE	YBBB	APAC	231300S	1282800E	-23.2167	128.4667	1	
FIR BRISBANE	YBBB	APAC	232200S	1262900E	-23.3667	126.4833	1	
FIR BRISBANE	YBBB	APAC	232700S	1241500E	-23.45	124.25	1	
FIR BRISBANE	YBBB	APAC	215300S	1222500E	-21.8834	122.4171	1	thence along the minor arc of a circle of 15.0 NM radius centred on
FIR BRISBANE	YBBB	APAC	213300S	1220100E	-21.5478	122.0149	1	221 43S

									122 13E (TELFER) to 21 33S 122 01E
FIR BRISBANE	YBBB	APAC	202600S	1204500E	-20.4333	120.75	1		thence along the minor arc of a circle of 120.0 NM radius centred on
FIR BRISBANE	YBBB	APAC	182300S	1182500E	-18.3831	118.4167	1		
FIR BRISBANE	YBBB	APAC	175300S	1182200E	-17.8833	118.3667	1		thence along the minor arc of a circle of 150.0 NM radius centred on
FIR BRISBANE	YBBB	APAC	140800S	1150900E	-14.1333	115.15	1		

Note:

1. APAC96/8: Consolidate Australia Boundaries

2. Coordinate Point 45 00S 150 00E, 34 57S 150 32E (NOWRA), 21 43S 122 13E (TELFER), 20 23S 118 37E (PORT HEDLAND), 20 23S 118 37E (PORT HEDLAND) to 19 94S 116 06E 19 31S 113 31E 12 00S 110 00E missing.

3. Adelaide, Darwin, Perth and Sydney FIRs were deleted

Honiara FIR



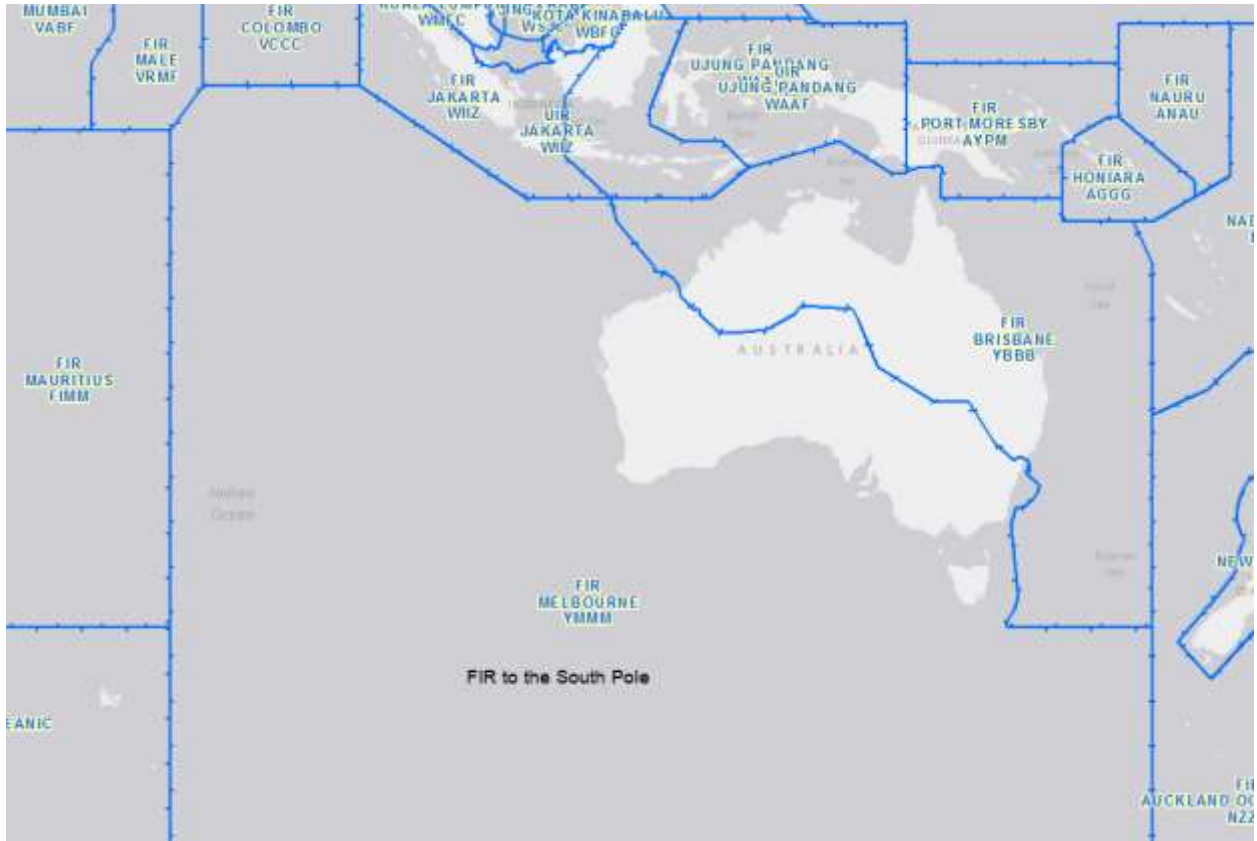
FIR Point

FIRNOMPTS	ICAO_CODE	REGION	LATdms	LONGdms	LAT	LONG	FIR_P	COMMENTS
FIR HONIARA	HGGG	APAC	103000S	1664500E	-10.5	166.75	1	
FIR HONIARA	HGGG	APAC	114800S	1665200E	-11.8	166.8667	1	
FIR HONIARA	HGGG	APAC	140000S	1630000E	-14	163	1	
FIR HONIARA	HGGG	APAC	140000S	1611500E	-14	161.25	1	
FIR HONIARA	HGGG	APAC	140000S	1550000E	-14	155	1	
FIR HONIARA	HGGG	APAC	120000S	1550000E	-12	155	1	
FIR HONIARA	HGGG	APAC	071900S	1550000E	-7.31667	155	1	
FIR HONIARA	HGGG	APAC	065600S	1553600E	-6.93333	155.6	1	
FIR HONIARA	HGGG	APAC	065600S	1554200E	-6.93333	155.7	1	
FIR HONIARA	HGGG	APAC	065100S	1555500E	-6.85	155.9167	1	
FIR HONIARA	HGGG	APAC	064000S	1560200E	-6.66667	156.0333	1	
FIR	HGGG	APAC	0633E	1560200E	-6.55	156.0333	1	

HONIARA								
FIR HONIARA	HGGG	APAC	103000S	1664500E	-10.5	166.75	4	

Note

Melbourne FIR



FIR Point

FIRNOMPTS	ICAO_CODE	REGION	LATdms	LONGdms	LAT	LONG	FIR_P	COMMENTS
FIR MELBOURNE	YMMM	APAC	900000S	1630000E	-89.9	163	1	
FIR MELBOURNE	YMMM	APAC	900000S	0750000E	-89.9	75	1	
FIR MELBOURNE	YMMM	APAC	450000S	0750000E	-45	75	1	
FIR MELBOURNE	YMMM	APAC	060000S	0750000E	-6	75	1	
FIR MELBOURNE	YMMM	APAC	020000S	0780000E	-2	78	1	
FIR MELBOURNE	YMMM	APAC	020000S	0920000E	-2	92	1	
FIR MELBOURNE	YMMM	APAC	120000S	1070000E	-12	107	1	
FIR MELBOURNE	YMMM	APAC	120000S	1100000E	-12	110	1	
FIR MELBOURNE	YMMM	APAC	120000S	1143000E	-12	114.5	1	

FIR MELBOURNE	YMMM	APAC	140800S	1150900E	- 14.1333	115.15	1	
FIR MELBOURNE	YMMM	APAC	175300S	1182200E	- 17.8833	118.3667	1	
FIR MELBOURNE	YMMM	APAC	182300S	1182500E	- 18.3831	118.4167	1	thence along the minor arc of a circle of 120.0 NM radius centred on
FIR MELBOURNE	YMMM	APAC	202600S	1204500E	- 20.4333	120.75	1	
FIR MELBOURNE	YMMM	APAC	213300S	1220100E	- 21.5478	122.0149	1	thence along the minor arc of a circle of 15 NM radius centred on
FIR MELBOURNE	YMMM	APAC	215300S	1222500E	- 21.8834	122.4171	1	
FIR MELBOURNE	YMMM	APAC	232700S	1241500E	-23.45	124.25	1	
FIR MELBOURNE	YMMM	APAC	232200S	1262900E	- 23.3667	126.4833	1	
FIR MELBOURNE	YMMM	APAC	231300S	1282800E	- 23.2167	128.4667	1	
FIR MELBOURNE	YMMM	APAC	215100S	1305800E	-21.85	130.9667	1	
FIR MELBOURNE	YMMM	APAC	211100S	1313400E	- 21.1833	131.5667	1	
FIR MELBOURNE	YMMM	APAC	212800S	1360900E	- 21.4667	136.15	1	
FIR MELBOURNE	YMMM	APAC	221800S	1363800E	-22.3	136.6333	1	
FIR MELBOURNE	YMMM	APAC	261400S	1382300E	- 26.2333	138.3833	1	
FIR MELBOURNE	YMMM	APAC	290000S	1433000E	-29	143.5	1	
FIR MELBOURNE	YMMM	APAC	290000S	1463200E	-29	146.5333	1	
FIR MELBOURNE	YMMM	APAC	320600S	1485000E	-32.1	148.8333	1	
FIR MELBOURNE	YMMM	APAC	332700S	1503300E	-33.45	150.55	1	
FIR	YMMM	APAC	332000S	1504200E	-	150.7	1	

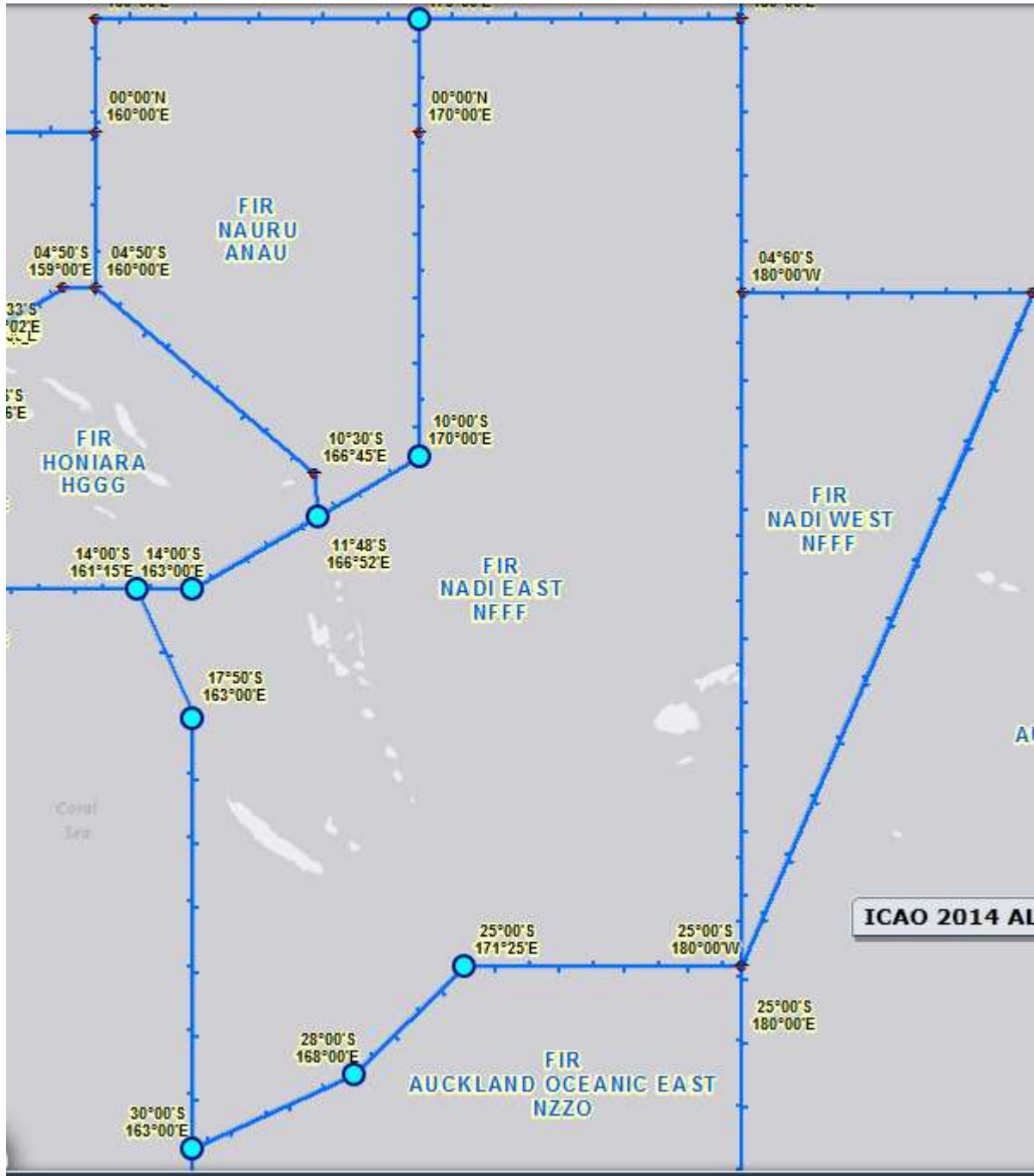
MELBOURNE					33.3333			
FIR MELBOURNE	YMMM	APAC	331200S	1511400E	-33.2	151.2333	1	
FIR MELBOURNE	YMMM	APAC	331500S	1512600E	-33.25	151.4333	1	
FIR MELBOURNE	YMMM	APAC	332800S	1514800E	-	151.8	1	
FIR MELBOURNE	YMMM	APAC	333500S	1515400E	-	151.9	1	
FIR MELBOURNE	YMMM	APAC	335900S	1520100E	-	152.0167	1	
FIR MELBOURNE	YMMM	APAC	342100S	1514000E	-34.35	151.6667	1	
FIR MELBOURNE	YMMM	APAC	351900S	1525600E	-	152.9333	1	thence along the minor arc of a circle of 120.0 NM radius centred on
FIR MELBOURNE	YMMM	APAC	365700S	1504500E	-36.95	150.75	1	
FIR MELBOURNE	YMMM	APAC	381100S	1501900E	-	150.3167	1	
FIR MELBOURNE	YMMM	APAC	430000S	1510000E	-43	151	1	
FIR MELBOURNE	YMMM	APAC	435100S	1504000E	-43.85	150.6667	1	
FIR MELBOURNE	YMMM	APAC	443400S	1500000E	-	150	1	
FIR MELBOURNE	YMMM	APAC	XXXXX	XXXXXX	-45	150	1	
FIR MELBOURNE	YMMM	APAC	450000S	1630000E	-45	163	1	

Note:

1. APAC 96/8-ATS/MET: Consolidation of Australian FIRs

2. Coordinate point 19 31S 113 31E, 19 34S 116 06E, 20 23S 118 37E (PORT HEDLAND), 20 23S 118 37E (PORT HEDLAND), 21 43S 122 18E (TELFER), 34 57S 150 32E (NOWRA), 90 00S (South Pole), 06 00S 075 00E missing.

Nadi FIR



FIR Point

FIRNOMPTS	ICAO_CODE	REGION	LATdms	LONGdms	LAT	LONG	FIR_P	COMMENTS
FIR NADI EAST	NFFF	APAC	033000N	1800000E	3.5	180	1	
FIR NADI EAST	NFFF	APAC	250000S	1800000E	-25	180	1	

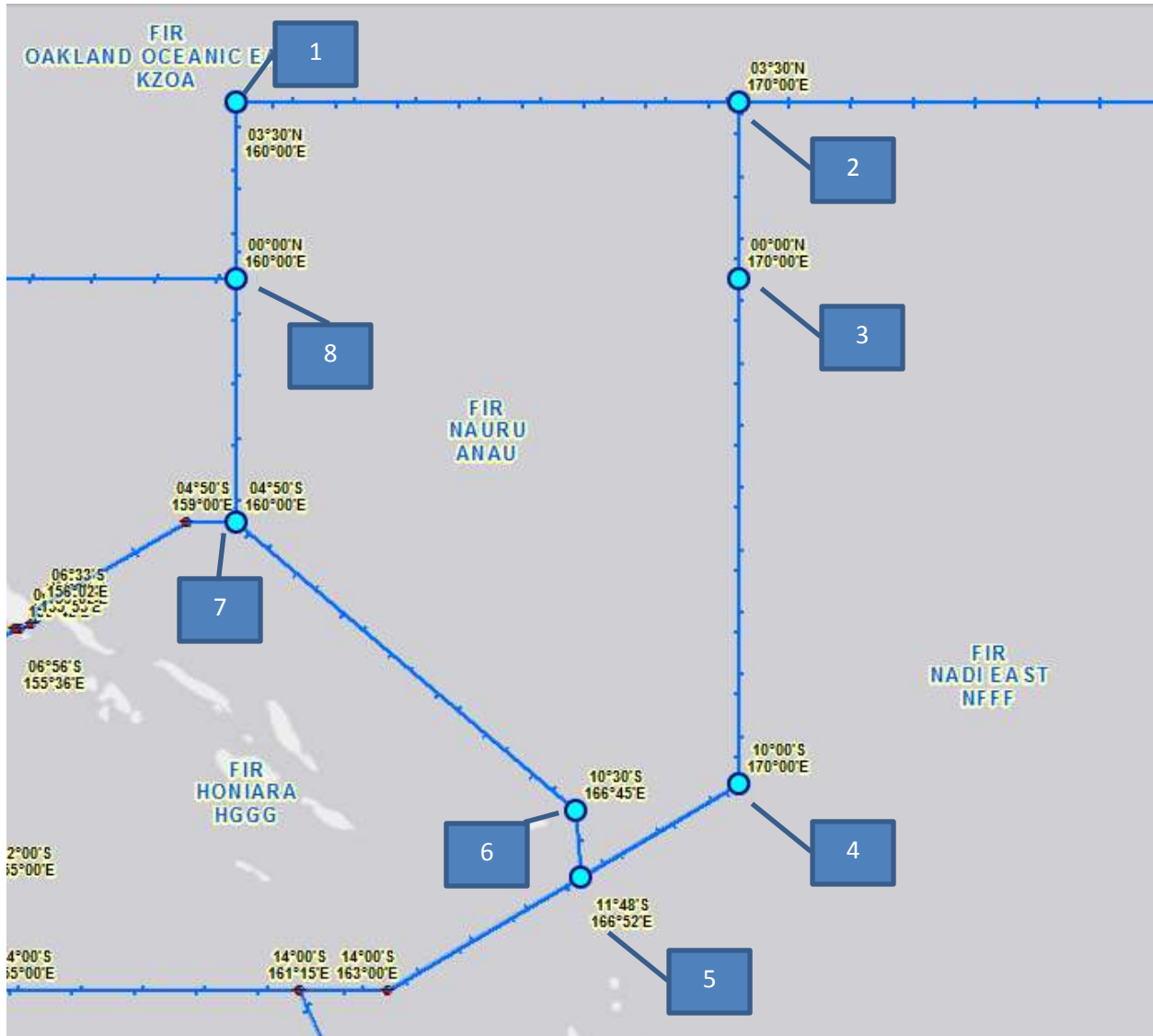
FIR NADI EAST	NFFF	APAC	250000S	1712500E	-25	171.4167	1	
FIR NADI EAST	NFFF	APAC	280000S	1680000E	-28	168	1	
FIR NADI EAST	NFFF	APAC	300000S	1630000E	-30	163	1	
FIR NADI EAST	NFFF	APAC	175000S	1630000E	-	17.8333	163	1
FIR NADI EAST	NFFF	APAC	140000S	1611500E	-14	161.25	1	
FIR NADI EAST	NFFF	APAC	140000S	1630000E	-14	163	1	
FIR NADI EAST	NFFF	APAC	114800S	1665200E	-11.8	166.8667	1	
FIR NADI EAST	NFFF	APAC	100000S	1700000E	-10	170	1	
FIR NADI EAST	NFFF	APAC	033000N	1700000E	3.5	170	1	
FIR NADI EAST	NFFF	APAC	033000N	1800000E	3.5	180	4	

FIRNOMPTS	ICAO_CODE	REGION	LATdms	LONGdms	LAT	LONG	FIR_P	COMMENTS
FIR NADI WEST	NFFF	APAC	050000S	1800000W	-5	-180	1	5 S; NOT 0460S
FIR NADI WEST	NFFF	APAC	050000S	1720000W	-5	-172	1	SET TO 172 w
FIR NADI WEST	NFFF	APAC	250000S	1800000W	-25	-180	1	

Note:

APAC 98/8-ATS/COM/MET/SAR/AIS: Re-alignment of the Nadi/Auckland FIR boundary

Nauru FIR



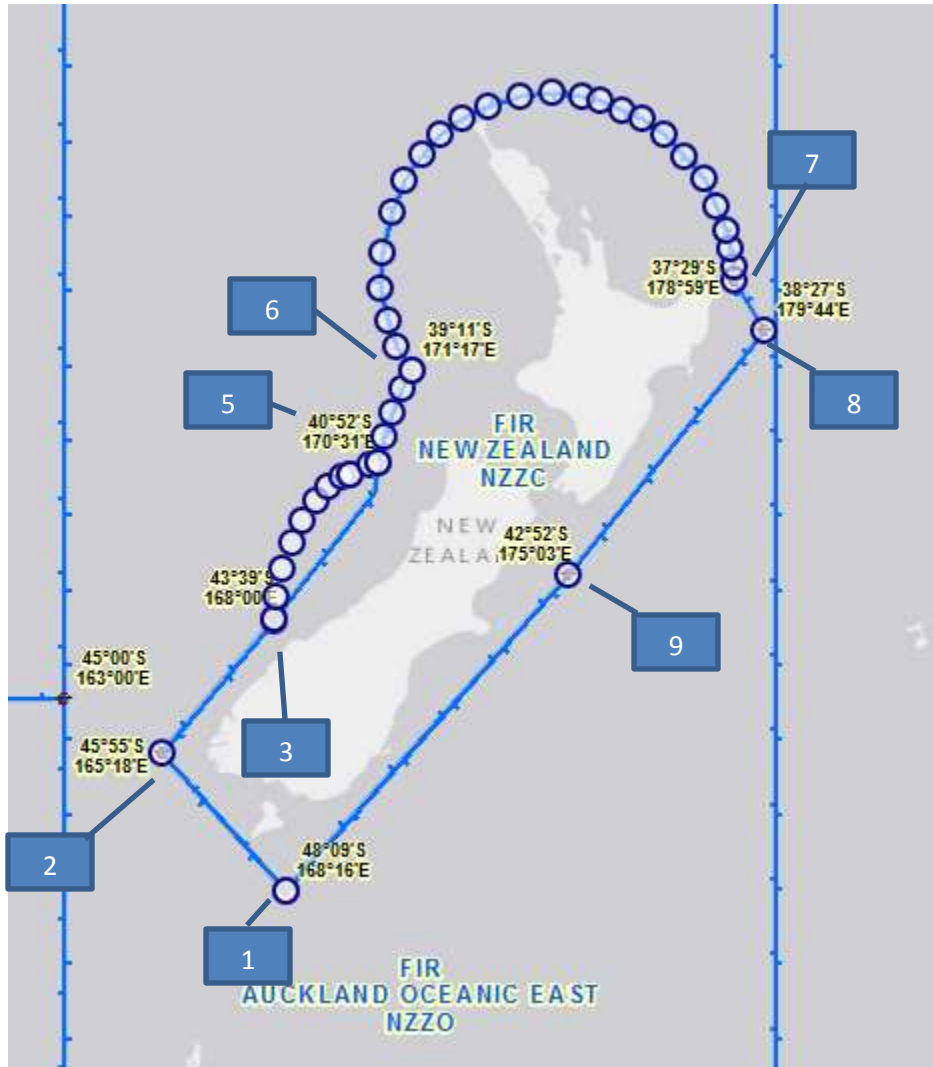
FIR Point

	FIRNOMPTS	ICAO_CODE	REGION	LATdms	LONGdms	LAT	LONG	FIR_P	COMMENTS
1	FIR NAURU	ANAU	APAC	033000N	1600000E	3.5	160	1	
2	FIR NAURU	ANAU	APAC	033000N	1700000E	3.5	170	1	
3	FIR NAURU	ANAU	APAC	000000N	1700000E	0	170	1	
4	FIR NAURU	ANAU	APAC	100000S	1700000E	-10	170	1	
5	FIR NAURU	ANAU	APAC	114800S	1665200E	-11.8	166.8667	1	
6	FIR NAURU	ANAU	APAC	103000S	1664500E	-10.5	166.75	1	
7	FIR NAURU	ANAU	APAC	045000S	1600000E	-4.83333	160	1	
8	FIR NAURU	ANAU	APAC	000000N	1600000E	0	160	1	

Note:

- No historical data was found

New Zealand FIR



FIR Point

	FIRNOMPTS	ICAO_CODE	REGION	LATdms	LONGdms	LAT	LONG	FIR_P	COMMENTS
1	FIR NEW ZEALAND	NZZC	APAC	480900S	1681600E	-48.15	168.2667	1	
2	FIR NEW ZEALAND	NZZC	APAC	455500S	1651800E	45.9167	165.3	1	
3	FIR NEW ZEALAND	NZZC	APAC	433900S	1680000E	-43.65	168	1	
4	FIR NEW ZEALAND	NZZC	APAC	410500S	1694900E	41.0792	169.8171	1	adjusted to circle
5	FIR NEW ZEALAND	NZZC	APAC	405200S	1703100E	40.8631	170.5087	1	adjusted to circle
6	FIR NEW ZEALAND	NZZC	APAC	391100S	1711700E	39.1771	171.2869	1	adjusted to circle

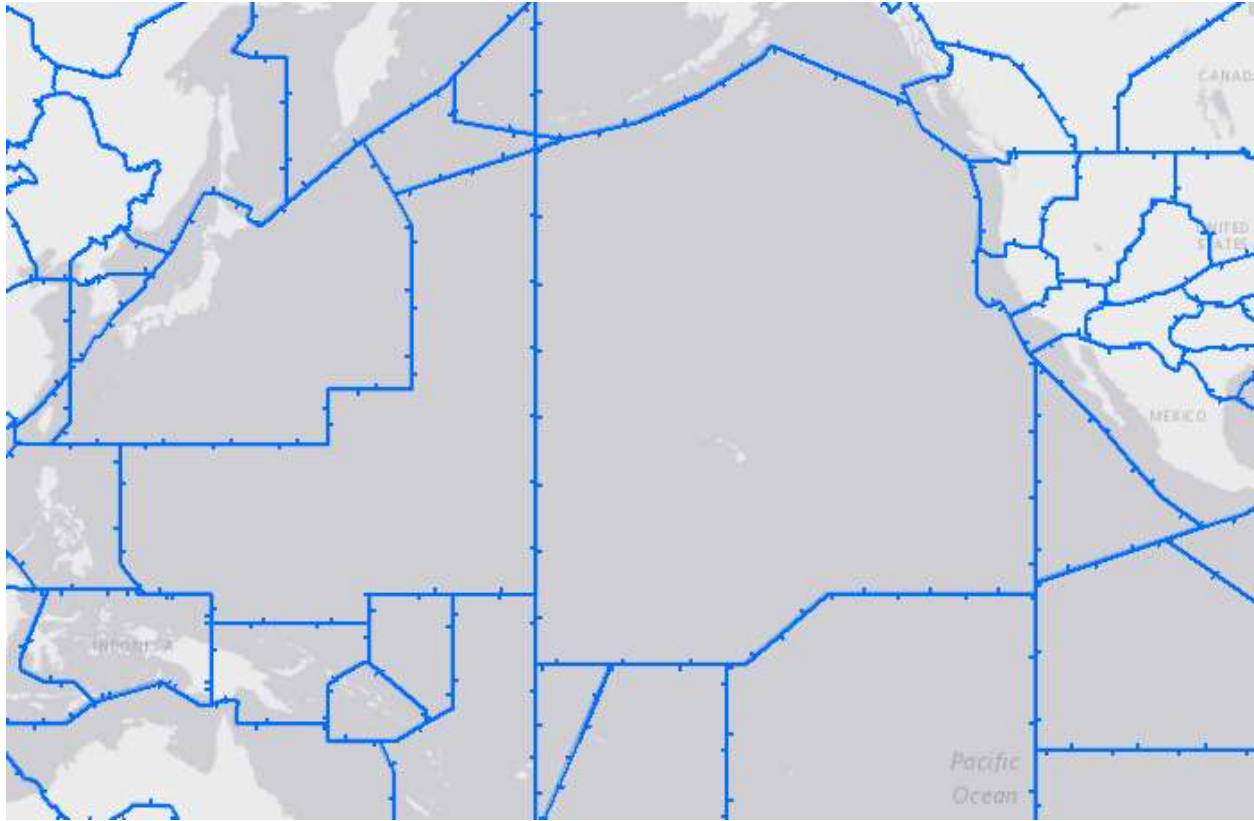
7	FIR NEW ZEALAND	NZZC	APAC	372900S	1785900E	- 37.4833	178.9833	1	
8	FIR NEW ZEALAND	NZZC	APAC	382700S	1794400E	-38.45	179.7333	1	
9	FIR NEW ZEALAND	NZZC	APAC	425200S	1750300E	- 42.8667	175.05	1	

Note:

- Point (4) missing

- No historical data was found

Oakland Oceanic East



FIRNOMPTS	ICAO_CODE	REGION	LATdms	LONGdms	LAT	LONG	Type	Comment
FIR OAKLAND OCEANIC EAST	KZOA	APAC	033000N	1800000E	3.5	180		
FIR OAKLAND OCEANIC EAST	KZOA	APAC	033000N	1700000E	3.5	170		
FIR OAKLAND OCEANIC EAST	KZOA	APAC	033000N	1600000E	3.5	160		
FIR OAKLAND OCEANIC EAST	KZOA	APAC	000000N	1600000E	0	160		
FIR OAKLAND OCEANIC EAST	KZOA	APAC	000000N	1410000E	0	141		
FIR OAKLAND OCEANIC EAST	KZOA	APAC	033000N	1410000E	3.5	141		
FIR OAKLAND OCEANIC EAST	KZOA	APAC	033000N	1330000E	3.5	133		
FIR OAKLAND OCEANIC EAST	KZOA	APAC	070000N	1300000E	7	130		
FIR OAKLAND OCEANIC EAST	KZOA	APAC	210000N	1300000E	21	130		
FIR OAKLAND	KZOA	APAC	210000N	1550000E	21	155		

OCEANIC EAST								
FIR OAKLAND OCEANIC EAST	KZOA	APAC	270000N	1550000E	27	155		
FIR OAKLAND OCEANIC EAST	KZOA	APAC	270000N	1650000E	27	165		
FIR OAKLAND OCEANIC EAST	KZOA	APAC	430000N	1650000E	43	165		
FIR OAKLAND OCEANIC EAST	KZOA	APAC	454200N	1625500E	45.7	162.9167		APAC03/3
FIR OAKLAND OCEANIC EAST	KZOA	APAC	491600N	1800000E	49.26667	180		
FIR OAKLAND OCEANIC EAST	KZOA	APAC	033000N	1800000E	3.5	180		

FIRNOMPTS	ICAO_CODE	REGION	LATdms	LONGdms	LAT	LONG	FIR_P	COMMENTS
FIR OAKLAND OCEANIC WEST	KZOA	APAC	491600N	180000W	49.26667	-180	1	
FIR OAKLAND OCEANIC WEST	KZOA	APAC	500800N	1763400W	50.13333	176.567	1	APAC03/3
FIR OAKLAND OCEANIC WEST	KZOA	APAC	512400N	1674900W	51.4	167.817	1	
FIR OAKLAND OCEANIC WEST	KZOA	APAC	533000N	1600000W	53.5	-160	1	
FIR OAKLAND OCEANIC WEST	KZOA	APAC	560000N	1530000W	56	-153	1	
FIR OAKLAND OCEANIC WEST	KZOA	APAC	564600N	1514500W	56.76667	-151.75	1	
FIR OAKLAND OCEANIC WEST	KZOA	APAC	524300N	1350000W	52.71667	-135	1	
FIR OAKLAND OCEANIC WEST	KZOA	APAC	510000N	1334500W	51	-133.75	1	
FIR OAKLAND OCEANIC WEST	KZOA	APAC	482000N	1280000W	48.33333	-128	1	
FIR OAKLAND OCEANIC WEST	KZOA	APAC	445400N	1263000W	44.9	-126.5	1	
FIR OAKLAND OCEANIC WEST	KZOA	APAC	360000N	1241200W	41.25	126.883	1	coord wrong set to 4115N 12653W
FIR OAKLAND OCEANIC WEST	KZOA	APAC	405900N	1265400W	40.98333	-126.9	1	
FIR OAKLAND OCEANIC WEST	KZOA	APAC	362800N	1265600W	40.85	-127	1	coord wrong set to 4051N 12700w
FIR OAKLAND	KZOA	APAC	395400N	1270000W	39.9	-127	1	

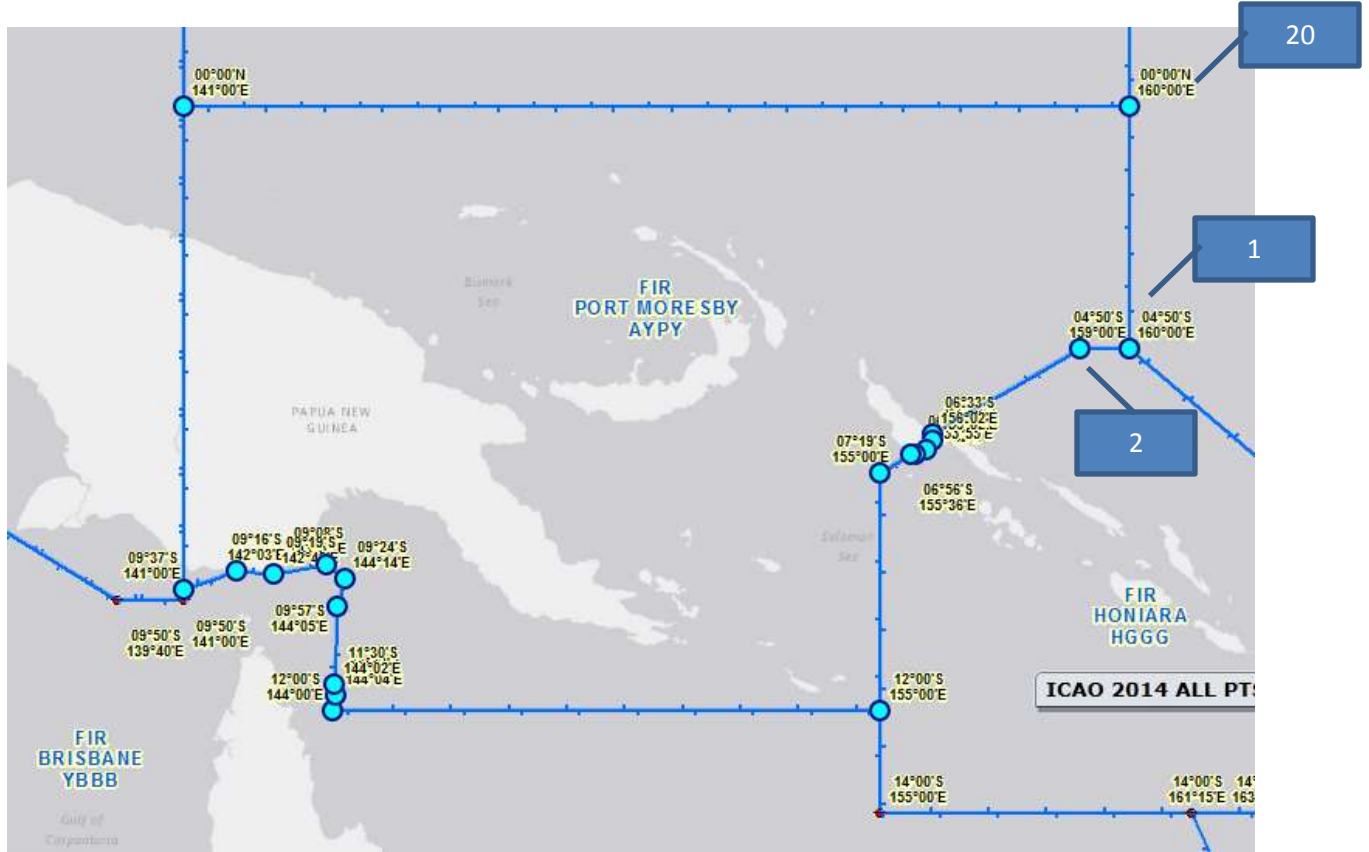
OCEANIC WEST								
FIR OAKLAND OCEANIC WEST	KZOA	APAC	373000N	1270000W	37.5	-127	1	
FIR OAKLAND OCEANIC WEST	KZOA	APAC	405000N	1270000W	36.46667	126.933	1	coord wrong set to 3628N 12656W
FIR OAKLAND OCEANIC WEST	KZOA	APAC	405900N	1265400W	35.5	125.833	1	coord wrong set to 3530N 12550W
FIR OAKLAND OCEANIC WEST	KZOA	APAC	353000N	1255000W	35.5	125.833	1	
FIR OAKLAND OCEANIC WEST	KZOA	APAC	411500N	1265300W	36.01667	124.233	1	coord wrong set to 3601N 12414W
FIR OAKLAND OCEANIC WEST	KZOA	APAC	343400N	1231500W	34.56667	-123.25	1	coord OK???
FIR OAKLAND OCEANIC WEST	KZOA	APAC	304500N	1205000W	30.75	120.833	1	
FIR OAKLAND OCEANIC WEST	KZOA	APAC	300000N	1200000W	30	-120	1	
FIR OAKLAND OCEANIC WEST	KZOA	APAC	050000N	1200000W	5	-120	1	
FIR OAKLAND OCEANIC WEST	KZOA	APAC	033000N	1200000W	3.5	-120	1	
FIR OAKLAND OCEANIC WEST	KZOA	APAC	033000N	1450000W	3.5	-145	1	
FIR OAKLAND OCEANIC WEST	KZOA	APAC	050000S	1550000W	-5	-155	1	
FIR OAKLAND OCEANIC WEST	KZOA	APAC	050000S	1570000W	-5	-157	1	
FIR OAKLAND OCEANIC WEST	KZOA	APAC	050000S	1600000W	-5	-160	1	
FIR OAKLAND OCEANIC WEST	KZOA	APAC	050000S	1800000W	-5	-180	1	
FIR OAKLAND OCEANIC WEST	KZOA	APAC	491600N	180000W	49.26667	-180	4	

Note:

1. APAC03/3 **Amend** the Oakland Oceanic/Anchorage Oceanic FIR boundary points starting at 45 42N/162 55E direct to 50 08N/176 34 W, rest of FIR unchanged.

Note: Delete FIR point 50 13N/177 06E

Port Moresby FIR



FIR Point

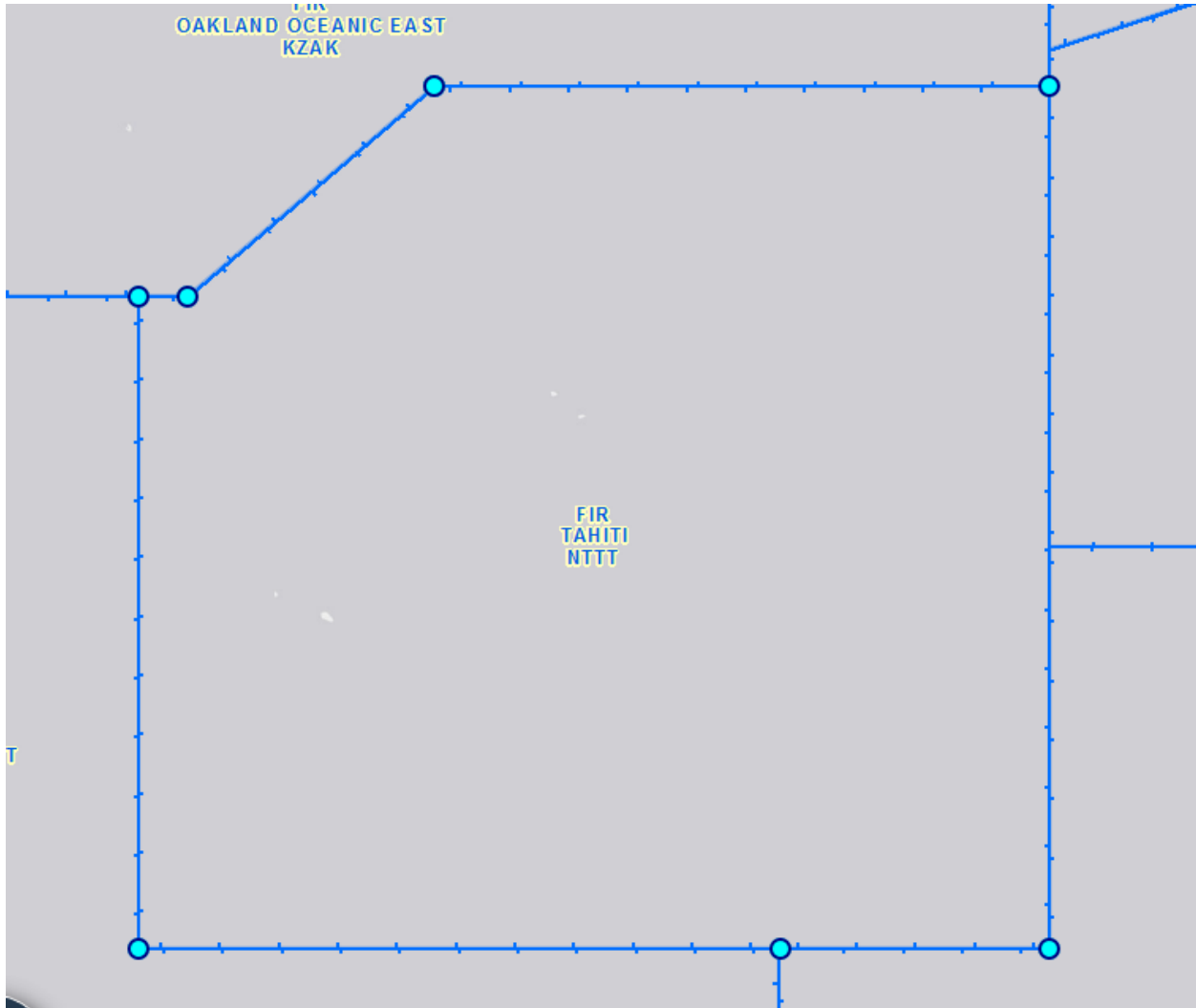
	FIRNOMPTS	ICAO_CODE	REGION	LATdms	LONGdms	LAT	LONG	FIR_P	COMMENTS
1	FIR PORT MORESBY	AYPY	APAC	045000S	1600000E	-4.83333	160	1	04°50'S160°00'E
2	FIR PORT MORESBY	AYPY	APAC	045000S	1590000E	-4.83333	159	1	04°50'S159°00'E
3	FIR PORT MORESBY	AYPY	APAC	063300S	1560200E	-6.55	156.0333	1	06°33'S156°02'E
4	FIR PORT MORESBY	AYPY	APAC	064000S	1560200E	-6.66667	156.0333	1	06°40'S156°02'E
5	FIR PORT MORESBY	AYPY	APAC	065100S	1555500E	-6.85	155.9167	1	06°51'S155°55'E
6	FIR PORT MORESBY	AYPY	APAC	065600S	1554200E	-6.93333	155.7	1	06°56'S155°42'E
7	FIR PORT MORESBY	AYPY	APAC	065600S	1553600E	-6.93333	155.6	1	06°56'S155°36'E
8	FIR PORT MORESBY	AYPY	APAC	071900S	1550000E	-7.31667	155	1	07°19'S155°00'E
9	FIR PORT MORESBY	AYPY	APAC	120000S	1550000E	-12	155	1	12°00'S155°00'E

10	FIR PORT MORESBY	AYPY	APAC	120000S	1440000E	-12	144	1	12°00'S144°00'E
11	FIR PORT MORESBY	AYPY	APAC	114300S	1440400E	-	144.0667	1	12°00'S144°00'E
12	FIR PORT MORESBY	AYPY	APAC	113000S	1440200E	-11.5	144.0333	1	11°30'S144°02'E
13	FIR PORT MORESBY	AYPY	APAC	095700S	1440500E	-9.95	144.0833	1	09°57'S144°05'E
14	FIR PORT MORESBY	AYPY	APAC	092400S	1441400E	-9.4	144.2333	1	09°24'S144°14'E
15	FIR PORT MORESBY	AYPY	APAC	090800S	1435200E	-	143.8667	1	09°08'S143°52'E
16	FIR PORT MORESBY	AYPY	APAC	091900S	1424800E	-	142.8	1	09°08'S143°52'E
17	FIR PORT MORESBY	AYPY	APAC	091600S	1420300E	-	142.05	1	09°08'S143°52'E
18	FIR PORT MORESBY	AYPY	APAC	093700S	1410000E	-	141	1	09°37'S141°00'E
19	FIR PORT MORESBY	AYPY	APAC	000000N	1410000E	0	141	1	00°00'N141°00'E
20	FIR PORT MORESBY	AYPY	APAC	000000N	1600000E	0	160	1	00°00'N160°00'E

Note:

- No historical data was found

Tahiti FIR



FIR Point

FIRNOMPTS	ICAO_CODE	REGION	LATdms	LONGdms	LAT	LONG	FIR_P	COMMENTS
FIR TAHITI	NTTT	APAC	033000N	1450000W	3.5	-145	1	03°30'N145°00'W
FIR TAHITI	NTTT	APAC	033000N	1200000W	3.5	-120	1	03°30'N120°00'W
FIR TAHITI	NTTT	APAC	300000S	1200000W	-30	-120	1	03°30'N120°00'W
FIR TAHITI	NTTT	APAC	300000S	1305400W	-30	-130.9	1	03°30'N120°00'W
FIR TAHITI	NTTT	APAC	300000S	1570000W	-30	-157	1	03°30'N120°00'W
FIR TAHITI	NTTT	APAC	050000S	1570000W	-5	-157	1	03°30'N120°00'W
FIR TAHITI	NTTT	APAC	050000S	1550000W	-5	-155	1	05°00'S155°00'W

Note: